

Attenuator and Distribution System

Zehnder ComfoWell 220

Benefits

- All air treatment functions available: attenuator, fine filter, active carbon filter, manifold box
- Modular design
- Compact dimensions
- Easy to clean
- Components connected with sliding profiles for easy mounting
- Pipes connected by end pieces with sleeves
- Directly connected to all components of the ComfoWell system
- Very good sound attenuation
- Two attenuators can be used in series for maximum sound reduction
- Mounting set available for vertical mounting of attenuators on ComfoAir 140
- High-efficiency fine filters up to filter class F9 available
- Odour neutralisation by active carbon filter
- Components available in width of 220 mm to connect 4 ComfoTubes

Article number

Designation	Art. no.
Attenuator CW-S 220	990 323 500
Manifold box CW-D 220	990 323 530
Filter housing CW-F 220	990 323 550



ComfoWell as attenuator



ComfoWell as manifold box



ComfoWell as filter housing

Description

Attenuator

Zehnder ComfoWell Attenuator CW-S 220. Compact rectangular attenuator with high-efficiency special sound attenuation pack and low pressure losses. The attenuator can be used on its own or in combination with any add-on from the ComfoWell system. It is connected to all add-ons with a folded joint and clamping rail to create an airtight seal. The attenuation element can be removed for inspection and cleaning. The attenuator is mounted on a wall or ceiling with height-adjustable mounting brackets. Mounting accessories are supplied with the unit.

Technical data:

Insertion loss: 12.8 dB / 250 Hz

Housing: Galvanised sheet steel

Attenuation element: Special foam with hygienic coating

Dimensions:

Length: 500 mm

Depth: 220 mm

Height: 230 mm

Manifold box

Zehnder ComfoWell Manifold Box CW-D 220. Compact sound-absorbing manifold box with closed-cell, attenuating inner lining, fits mounting plate for ComfoTube 4 x 75 or 4 x 90 ventilation pipes. The mounting plate connection can be moved from the front to the side. The manifold box can be used on its own or in combination with any add-on. It is connected to all add-ons with a folded joint and clamping rail to create an airtight seal. The manifold box features an access panel for easy cleaning and adjustment of the ComfoTube ventilation pipes. Mounting accessories are supplied with the unit.

Material: Galvanised sheet steel

Dimensions:

Length: 230 mm

Width: 220 mm

Height: 230 mm

Filter housing

Zehnder ComfoWell Filter Housing CW-F 220. Compact filter housing for mounting in supply line, to accommodate pollen filter F7 or active carbon filter element. Filter elements are not supplied with the unit. The manifold box can be used on its own or in combination with any add-on from the ComfoWell system. It is connected to all add-ons with a folded joint and clamping rail to create an airtight seal. It is mounted with adjustable mounting brackets; mounting accessories are included.

Material: Galvanised sheet steel

Dimensions:

Length: 300 mm

Width: 220 mm

Height: 230 mm

Specifications

Material:

Housing: Galvanised sheet steel

Inner lining: Closed-cell melamine resin foam

Permissible operating temperature range: -25°C to +60°C

Maximum airflow: 160 m³/h at normal ventilation level

Accessories

Designation	Art. no.
Mounting plate CW-M 220-4 x 75	990 323 520
Mounting plate CW-M 220-4 x 90	990 323 521
End plate CW-P 220 – DN 125	990 323 510
Mounting set CW-K 220 – CA 140	990 323 515
Spacer frame CW-DF 220	990 323 534
Fine dust filter CW-F7 220	990 323 600
Fine dust filter CW-F9 220	990 323 601
Fine dust filter CW-FC 220	990 323 602

Description of accessories

Mounting plate:

Zehnder ComfoWell Mounting Plate CW-M220-4 x 75 or 90 for connecting 4x Zehnder ComfoTube 75 or 90 flexible ducts. Supplied with guard and clamping rails. Mounting plate can also be used for mounting in concrete.

End plate:

Zehnder ComfoWell End Plate CW-P 220 - DN125 (with central support) for connecting the ComfoWell attenuator and distribution system to a DN125 round duct. Clamping rails included.

Mounting set:

A special mounting set is available for the Zehnder ComfoWell 220 attenuator and distribution system for direct mounting on the ComfoAir 140 ventilation unit. The set includes all the necessary accessories (screws, brackets and mounting brackets).

Spacer frame:

Zehnder ComfoWell Spacer Frame CW-DF220 to compensate for uneven surfaces when components and mounting plate (concreted in place) are at 90°. Spacer frame includes the necessary mounting accessories.

Filter:

Filter for mounting in filter housing CW-F 220. Available filter classes include F7 (pollen filter), F9 (fine dust filter) and an active carbon filter for odour neutralisation.



Mounting plate



End plate



Mounting set



Spacer frame



Fine dust filter F7



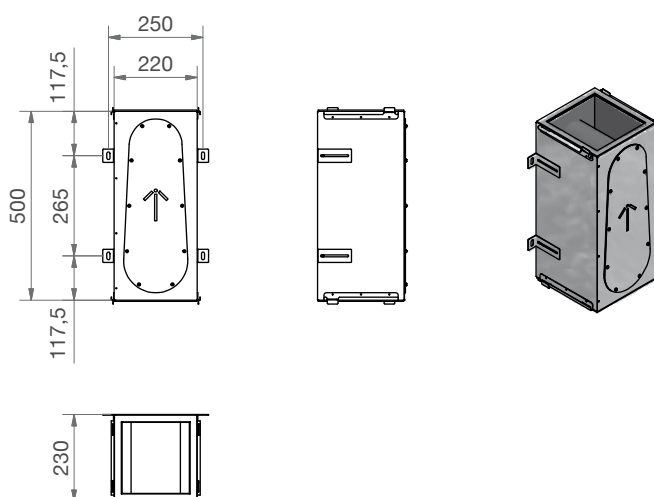
Fine dust filter F9



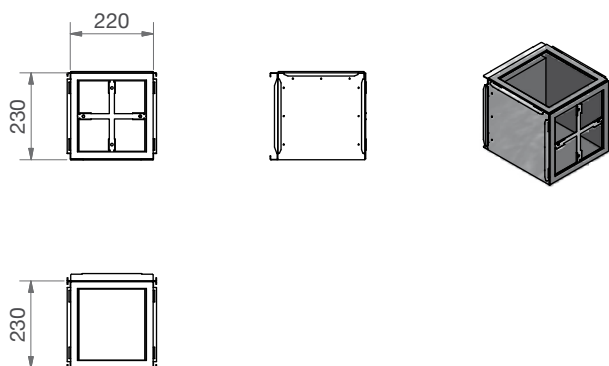
Active carbon filter FC

Dimensional drawings

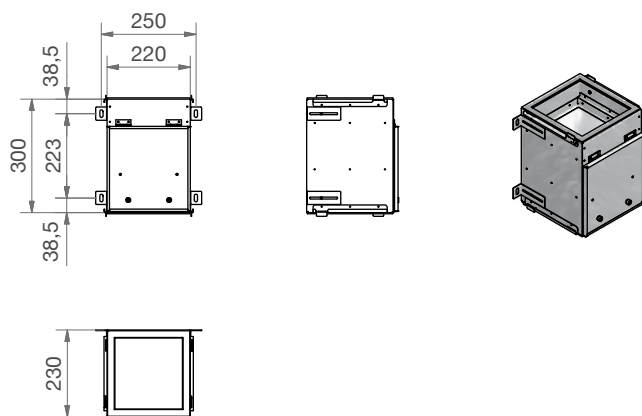
Attenuator



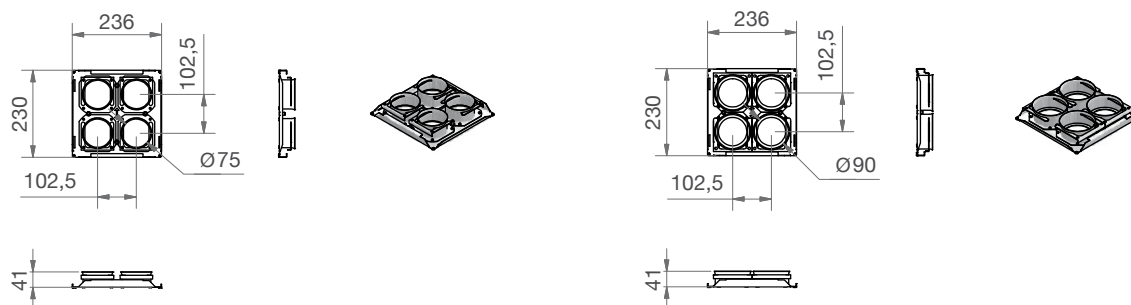
Manifold box



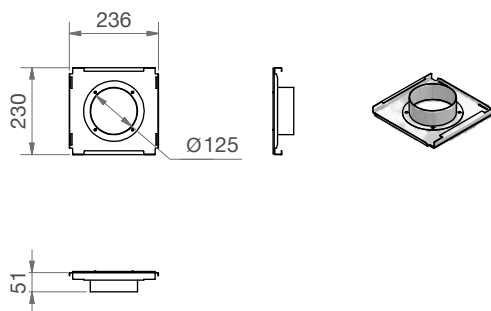
Filter housing



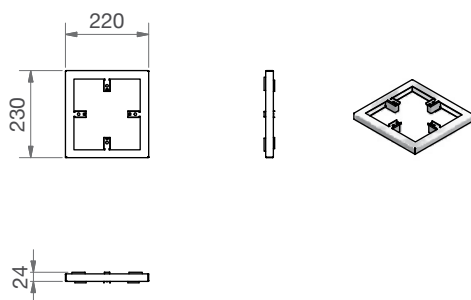
Mounting plates



End plate



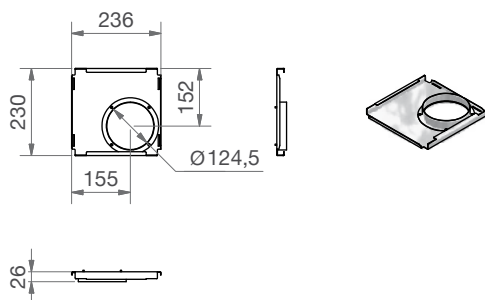
Spacer frame



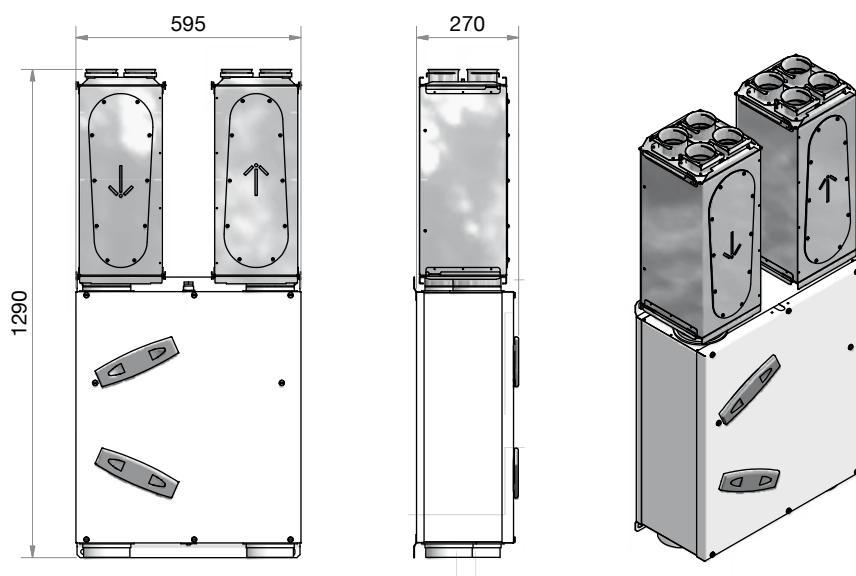
Attenuator and Distribution System

Zehnder ComfoWell 220

Mounting set 140

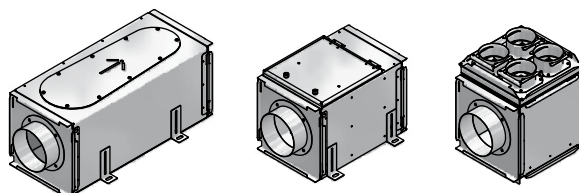


ComfoAir 140 with mounting set

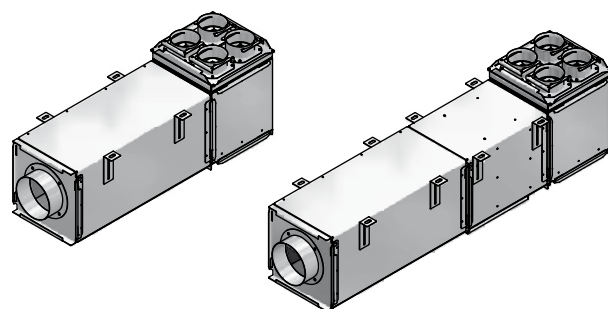


Usage scenarios

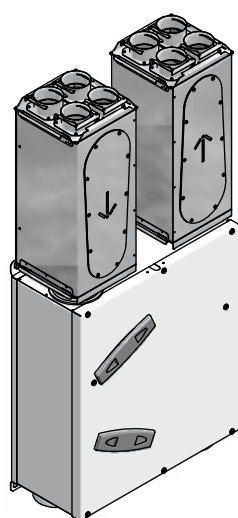
Standalone



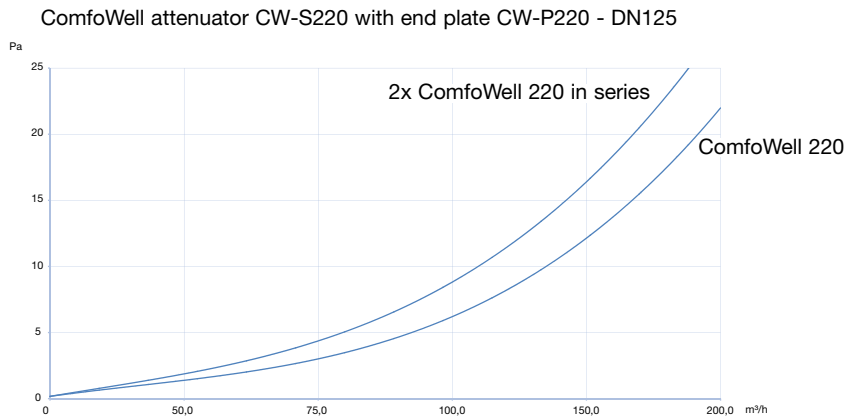
Combined



Compact with ventilation unit



Pressure losses



Insertion loss

1x end plate CW-P220 - DN125 + 1x attenuator CW-S220 +
1x end plate CW-P220 - DN125

Frequency Hz	63	125	250	500	1000	2000	4000	8000
Connection DN 125 [dB]	5.3	17.6	12.8	14.6	17.5	32.3	36.6	37.8

1x end plate CW-P220 - DN125 + 2x attenuator CW-S220 +
1x end plate CW-P220 - DN125

Frequency Hz	63	125	250	500	1000	2000	4000	8000
Connection DN 125 [dB]	8.8	23.9	23.1	25.7	32.4	53.3	57.6	56.6

1x end plate CW-P220 - DN125 + 1x attenuator CW-S220 +
1x mounting plate CW-M220- 4 x 75/90

Frequency Hz	63	125	250	500	1000	2000	4000	8000
Connection DN 125 [dB]	18.7	14.4	19.8	18.3	22.1	34.7	34.4	37.8

1x end plate CW-P220 - DN125 + 2x attenuator CW-S220 +
1x mounting plate CW-M220- 4 x 75/90

Frequency Hz	63	125	250	500	1000	2000	4000	8000
Connection DN 125 [dB]	19.9	19.6	29.3	29.8	37.8	53.5	56.8	56.4

CDE-FLYERTS221, V0911, en, subject to change without notice